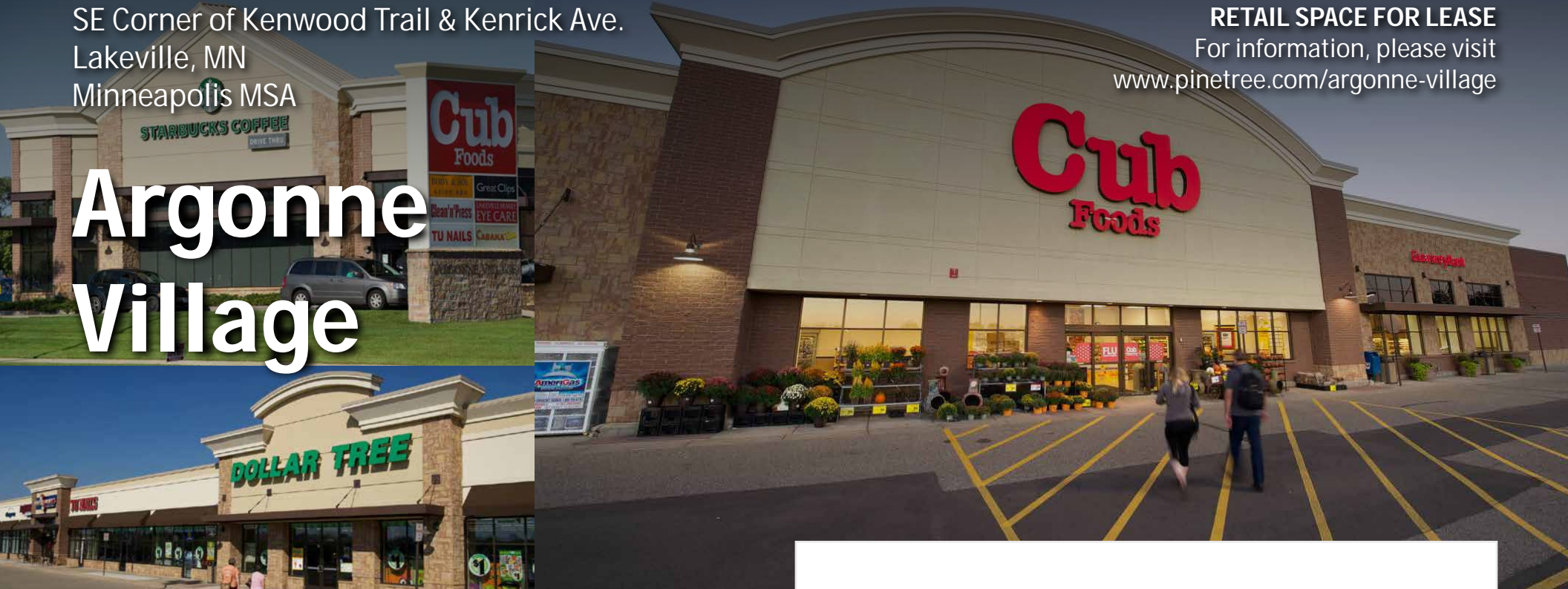


SE Corner of Kenwood Trail & Kenrick Ave.  
Lakeville, MN  
Minneapolis MSA

RETAIL SPACE FOR LEASE  
For information, please visit  
[www.pinetree.com/argonne-village](http://www.pinetree.com/argonne-village)

# Argonne Village



## FEATURES

- Dominant grocery-anchored center in Lakeville with strong line-up of national, regional and local retailers including Cub Foods, Dollar Tree, Starbucks, Aveda Salon, Erbert & Gerberts & more.
- Conveniently located just 20 miles south of Minneapolis, the center benefits from multiple access points and high visibility along Kenwood Trail with nearly 18,000 vehicles passing the center daily.
- Serving an affluent population of 43,000 residents with an average household income of nearly \$134,000 within 3 miles.



View more storefront and aerial photos at:  
[www.pinetree.com/argonne-village](http://www.pinetree.com/argonne-village)

**Leasing Contact**  
Alex Corno - Senior Leasing Manager

✉ [acorno@pinetree.com](mailto:acorno@pinetree.com)  
☎ (630) 451-8590

Pine Tree  
40 Skokie Blvd, Suite 610  
Northbrook, IL 60062

[www.pinetree.com](http://www.pinetree.com)  
[info@pinetree.com](mailto:info@pinetree.com)

*Pine Tree*

# Tenant Roster

| UNIT | TENANT                         | SF     |
|------|--------------------------------|--------|
| 1    | Aveda                          | 2,319  |
| 2    | Lakeville Tobacco              | 1,801  |
| 3    | Zika Chiropractor              | 1,200  |
| 4    | Eddie Cheng Chinese Restaurant | 1,200  |
| 5    | Great Clips                    | 1,200  |
| 6    | Clean 'N Press                 | 1,200  |
| 7    | Papa Johns Pizza               | 1,574  |
| 9    | Lakeville Family Eye Care      | 1,797  |
| 10   | \$5 Tan                        | 2,800  |
| 11   | Scenthound                     | 1,400  |
| 12   | Nautical Bowl                  | 1,400  |
| 13   | Fuchi Poke Sushi               | 1,359  |
| 14   | Erbert & Gerbert's             | 1,441  |
| 15   | Tu Nails                       | 1,400  |
| 16   | Dollar Tree                    | 7,971  |
| 17   | Cub Foods                      | 71,979 |
| 18   | Starbucks                      | 1,788  |
| 20   | Sprint                         | 1,272  |
| 21   | FedEx O ice                    | 1,715  |
| 22   | Miller Comfort Dental          | 3,235  |
| 24   | Wendy's                        | NAP    |
| 25   | Walgreens                      | NAP    |
| 26   | BMO Harris Bank                | NAP    |
| 201  | Taco Bell                      | NAP    |



Argonne Village

**LEGEND**

- AVAILABLE
- DEVELOPABLE
- NOT A PART
- NOT A PART

Pine Tree

# Data & Demographics

Data provided by Credintell - Trailing 12-Month Analysis



| Total Population | Total Households | Avg Household Income | Total Visits |
|------------------|------------------|----------------------|--------------|
| 205.3K           | 74.6K            | \$111.4K             | 2.8M         |

| Ethnicity              |        |
|------------------------|--------|
| Asian                  | 3.57%  |
| Black/African-American | 2.69%  |
| Hispanic/Latino        | 3.37%  |
| White/Caucasian        | 87.75% |
| Other                  | 2.62%  |

## Trade Area | Closest 70% of Visits

Aggregation of closest census blockgroups comprising 70% of the shopping center's visitation. Blockgroups based on where mobile devices visiting the location were most often observed overnight.